

Compendium

What barriers do people face when accessing work, transport, education and training?

Contact:
Joanna Bulman
los@ons.gsi.gov.uk

Release date:
10 April 2014

Next release:
To be announced

Table of contents

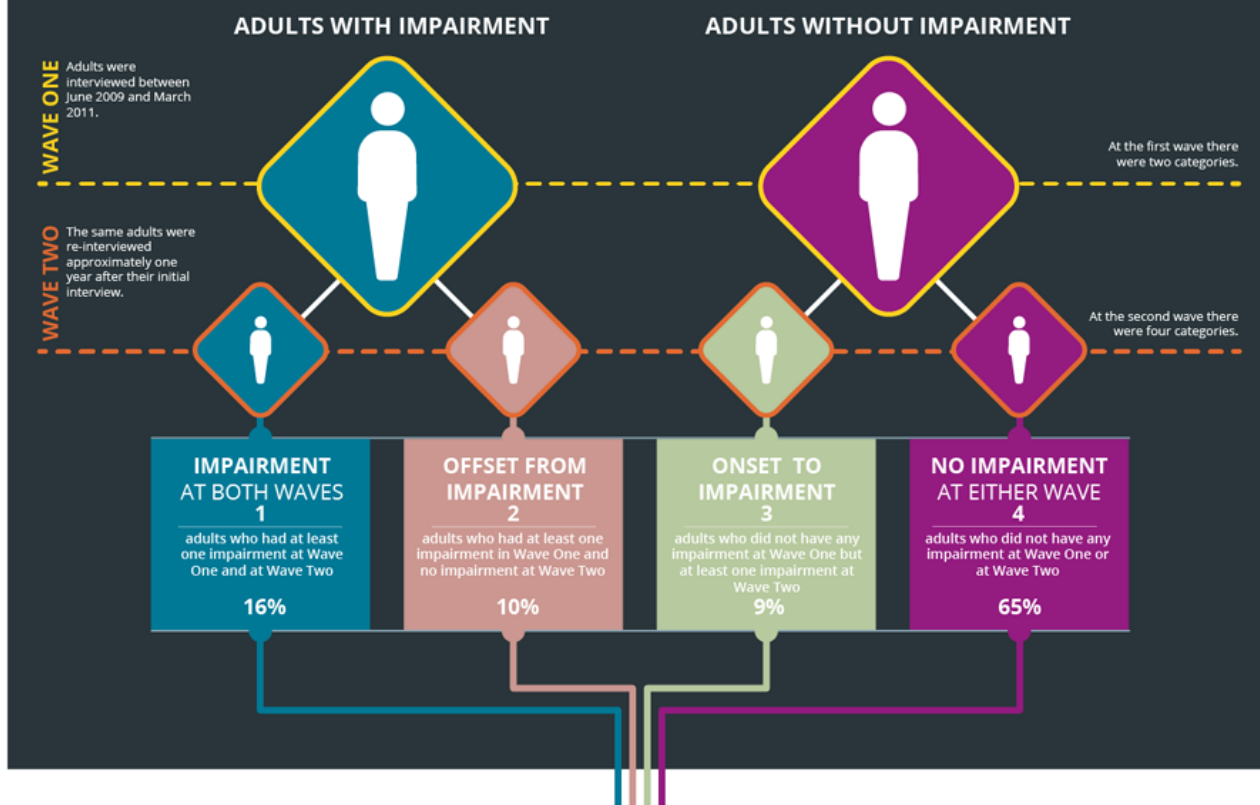
1. [Infographic exploring disability in Great Britain in terms of social barriers to participation that people experience across a range of 'life areas'](#)

1 . Infographic exploring disability in Great Britain in terms of social barriers to participation that people experience across a range of 'life areas'

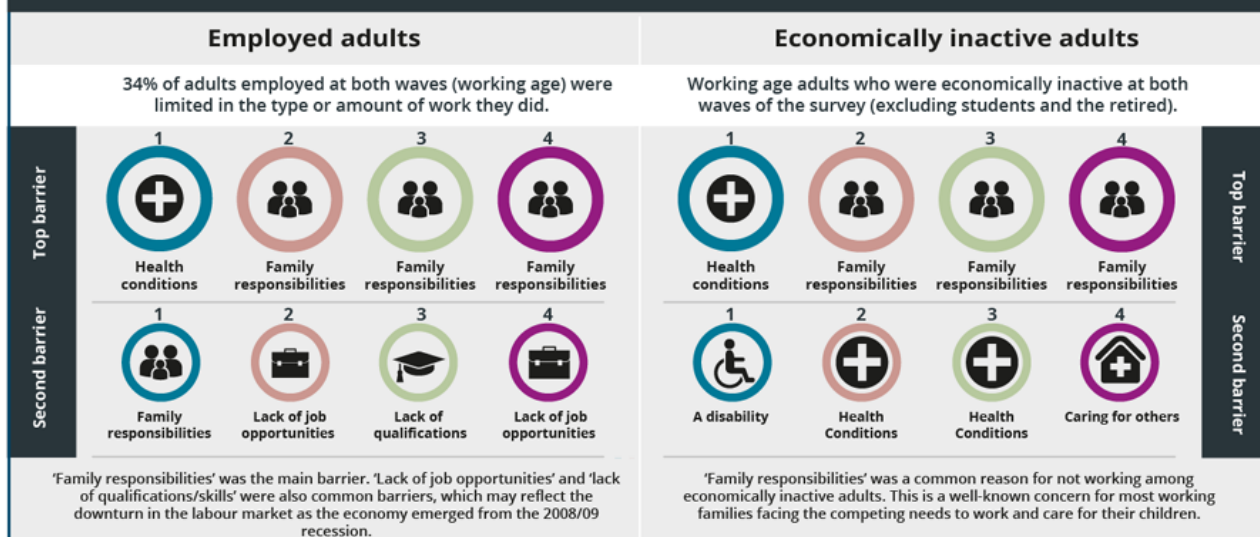
What barriers do people face when accessing work, transport, education and training?

Life Opportunities Survey, 2009-2012

The Life Opportunities Survey explores disability in Great Britain in terms of the social barriers to participation that people experience across a range of 'life areas', including work, education and training, and transport. Findings from the survey are used by the Department for Work and Pensions to understand more about barriers adults experience, and help inform the development of policy for disabled people in Great Britain. This infographic presents a summary of the top two barriers (for example, cost) experienced by working age adults surveyed, comparing the experience of adults with and without impairment (for example, loss of sight). Full details can be seen in the full report: **Life Opportunities Survey - Understanding disability Wave Two Part II**, which is available at www.ons.gov.uk.

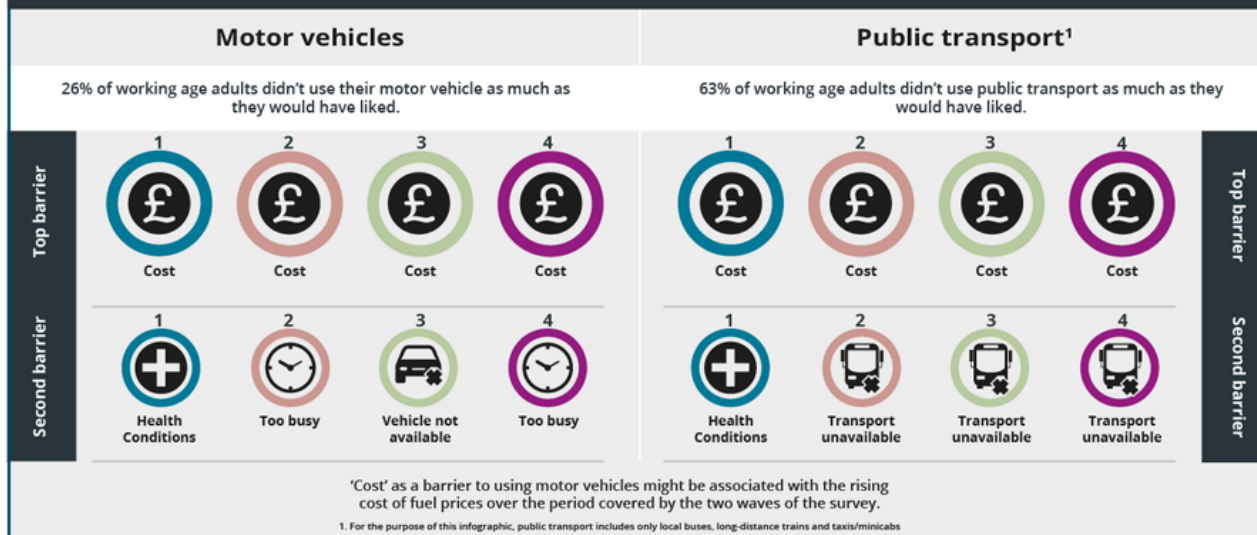


Top barriers to work

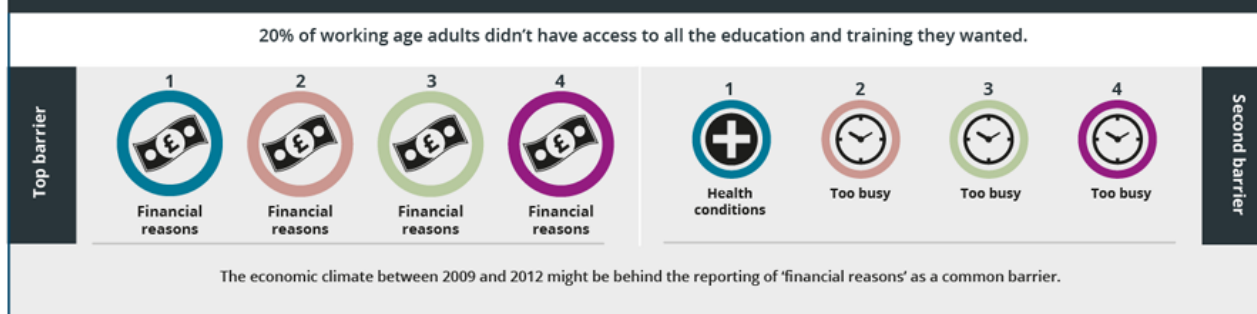


Top barriers to transport

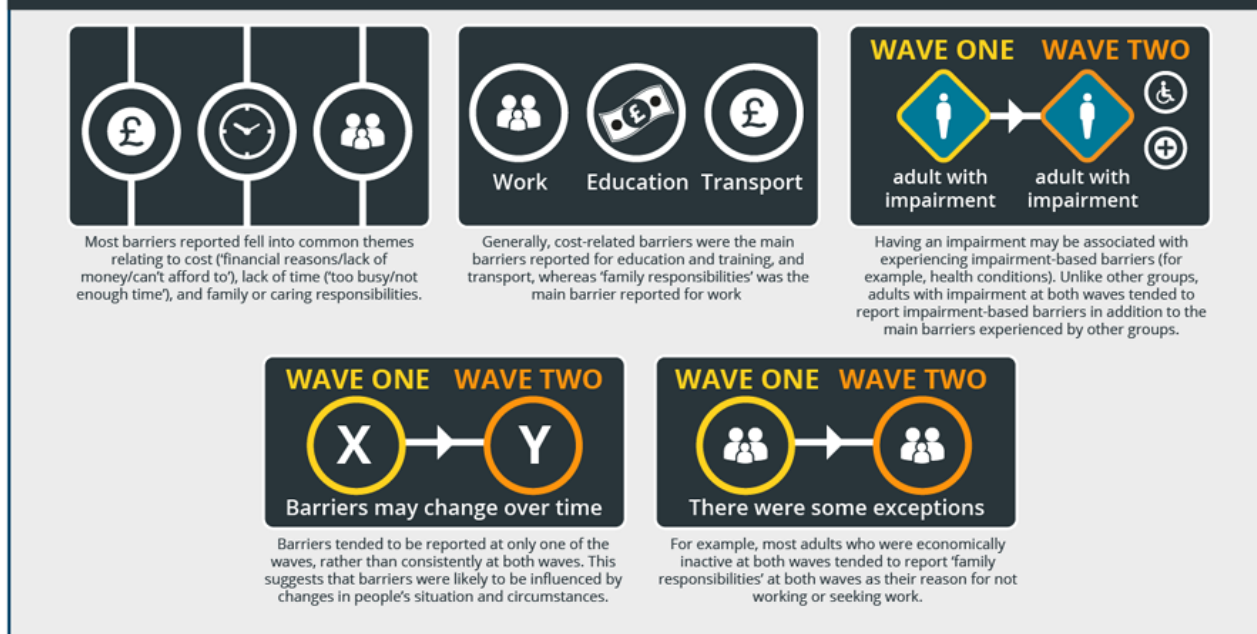
Top barriers to transport



Top barriers to education and training



Main findings



Explanation of barriers



The Life Opportunities Survey explores disability in Great Britain in terms of the social barriers to participation that people experience across a range of 'life areas', including work, education and training, and transport. Findings from the survey are used by the Department for Work and Pensions to understand more about barriers adults experience, and help inform the development of policy for disabled people in Great Britain. This infographic presents a summary of the top two barriers (for example, cost) experienced by working age adults surveyed, comparing the experience of Adults with and without impairing (for example, loss of sight). Full details can be seen in the full [Life Opportunities Survey - understanding disability Wave Two Part II](#) report.